



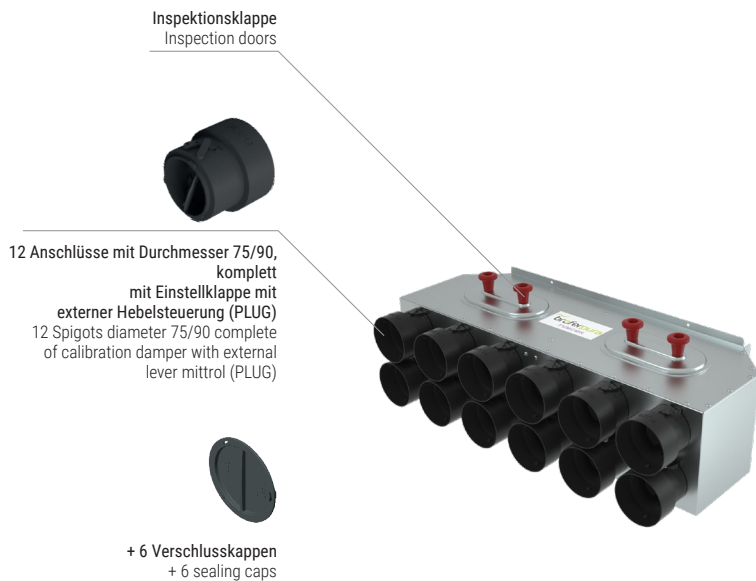
PLUGPVMCMR



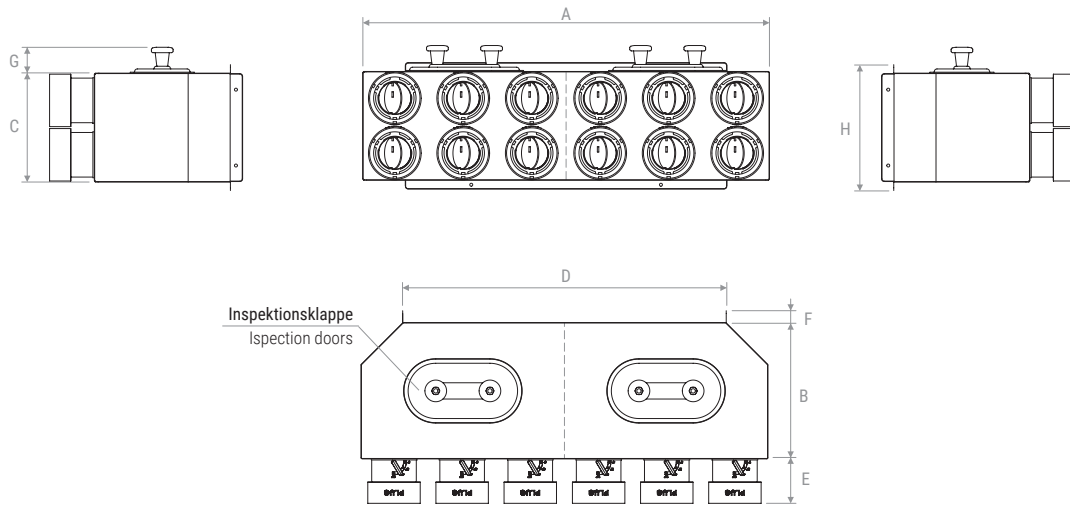
Technisches
Datenblatt
Data sheet

Beschreibung: Multidirektionaler Verteilerkasten für Zu- und Abluft aus verzinktem Blech mit schalldämmender Innenisolierung. Komplett mit Inspektionsklappen.

Description: multidirectional distribution Kasten **supply/return** made of galvanized sheet with internal acoustic insulation. Complete of inspection doors.



ZEICHNUNGEN | DRAWINGS



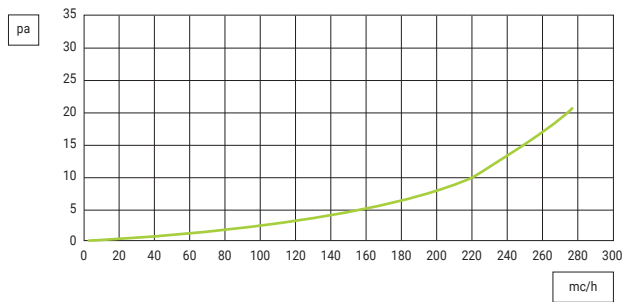
	A	B	C	D	E	F	G	H
mm	750	251	200	595	82	22	48	232



PLUGPVMCMR

DRUCKVERLUSTE | PRESSURE DROP

PLUGPVMCMR DRUCKVERLUSTE FÜR EINZELSTROM | AIR PRESSURE DROP FOR SINGLE



VERSIONEN | VERSION

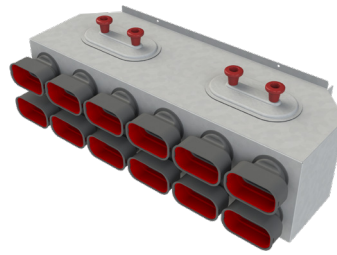
PLUGPVMCMR

Standardversion für Rundrohre
Standard version with circular hose



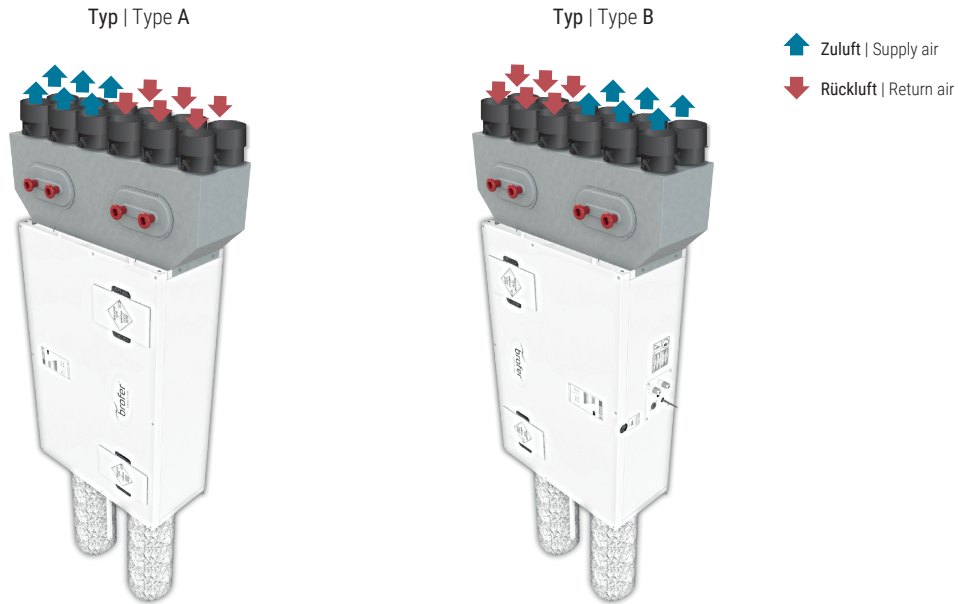
TVMSOPVMCMR

Version für Ovalrohre
Version for oval hose



KOMPATIBILITÄT | COMPATIBILITY

GEEIGNET FÜR | SUITABLE FOR:
RDCD25SKC / RDCD40SKC / RDCD25SKHC / RDCD50SKC



ACCESSORIES - DOMESTIC

PREISE | PRICES

Modell Model	€
PLUGPVMCMR	
TVMSOPVMCMR	

